

1. DIMENSIONS ARE TAKEN TO FACE OF ICF, FACE OF STUD, AND CENTRELINE OR FACE OF COLUMN.

UNIT #104

DEN
9'x9'

KITCHEN
8'-8 1/2'x9'

DINING ROOM
8'-5 1/2'x12'-6"

LIVING ROOM
10'-10" x 17'-3"

FOYER
5'x7'-5"

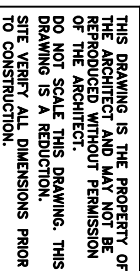
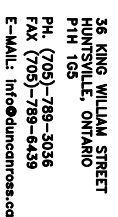
UTILITY
4'x7'-5"

MASTER BEDROOM
14'x15'

BATH
8'-6" x 5'

ENSUITE
8'-6" x 8'-5"

Wheelchair accessible icon in Dining Room.



ISSUED		
NO.	DATE	DESCRIPTION
01.	16/09/18	TO AMENDING

REVISIONS

PROJECT GRANITE HARBOUR CONDO PHASE #2	
PROJECT NUMBER 16-74	
DESCRIPTION UNIT LAYOUT	
DRAWN N.Z.	SHEET NUMBER SK-4
CHECKED D.R.	
SCALE 1/8" = 1'-0"	