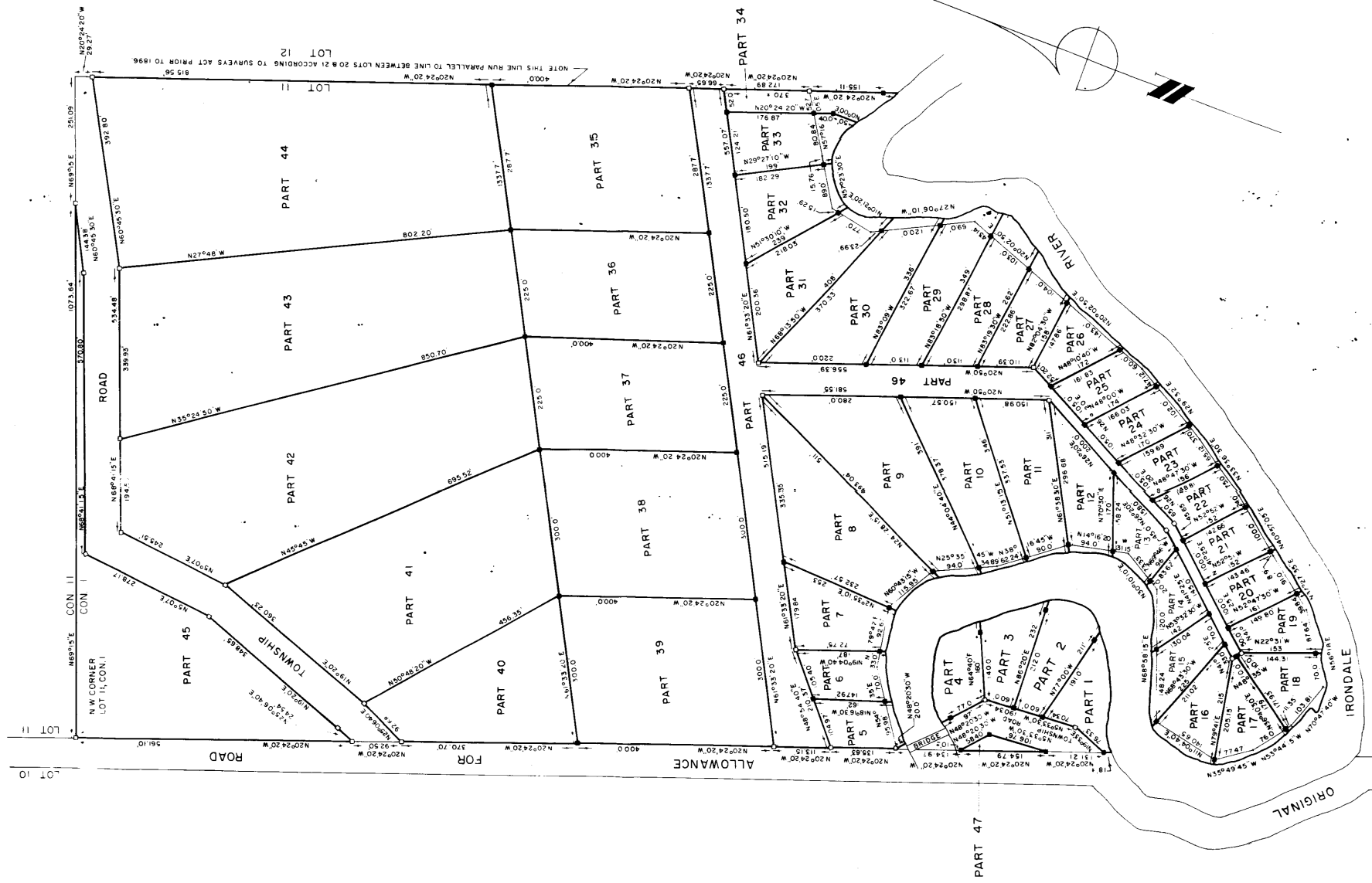


I REQUIRE THIS PLAN TO BE DEPOSITED UNDER PART II OF THE REGISTRY ACT.

Edward New
Chairman of Pool
L. J. Baker
Jean Rinow
Betty Austin



NOTE THIS LINE RUN PARALLEL TO LINE BETWEEN LOTS 20 & 21 ACCORDING TO SURVEYS ACT PRIOR TO 1896
LOT 12

NOTE
D INDICATES STANDARD IRON BAR (1" x 1/4")